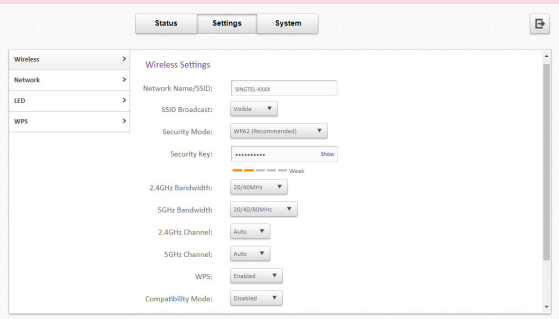


How to manage your WiFi settings:

1. Open your internet browser and type in 192.168.1.254 in the URL box and enter.
2. Proceed to login using the username and password printed at the bottom label of the ONR or Router (if using ONT).
3. Click on the tab that lists the home devices like your phone or computer that are connected to the ONR or Router (if using ONT).
4. Look for Device called 'Singtel Mesh Extender' and take note of the IP address (E.g. 192.168.1.65).
5. Type in the IP address in your browser URL and enter.
6. Proceed to login using the username and password printed at the back label of the Mesh Router Extender.



7. Click on the Settings on the top menu and select Wireless on the left menu.
8. You can change your WiFi Network name and password.



Mesh Extender Front.



MESH:
Indicate MESH
connection status

Mesh Extender Back.



WPS:
Press & hold for
2 seconds to
pair with your
WiFi Extender.

LAN Port

Mesh LED Status

Continuous blue light - Stable connection.
Continuous amber or red - Poor or no connection to the network.

Mesh LED

Troubleshooting instructions if LED Amber/Red:
Position your Mesh Extenders closer to each other and make sure they are powered on.

For detailed setup instruction,
please scan the following QR code:



Or visit bit.ly/routerontsupport
Installation time will be approximately 20 - 30mins.



Quick Installation Guide for Mesh Extender (Dual Pack).

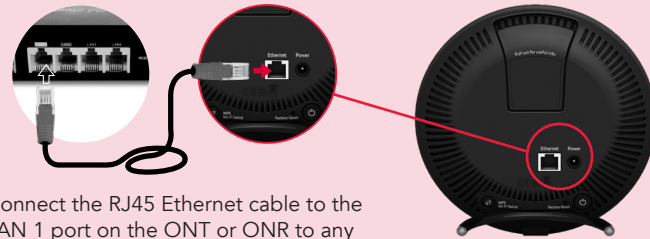
Your quick and easy
step-by-step guide to setting
up your Fibre Broadband.

MESH SET-UP 1

Setting up your Mesh Extender (You are not currently using a Mesh Router).

1. Connect LAN 1 port on the ONR to the LAN port at the back of a unit of Mesh Extender using an RJ45 Ethernet Cable.

Connect the first unit to a power point with the adapter provided and switch on. Depress the power button on the back of the device if the device does not turn on.



Connect the RJ45 Ethernet cable to the LAN 1 port on the ONT or ONR to any LAN port on the Mesh Extender.

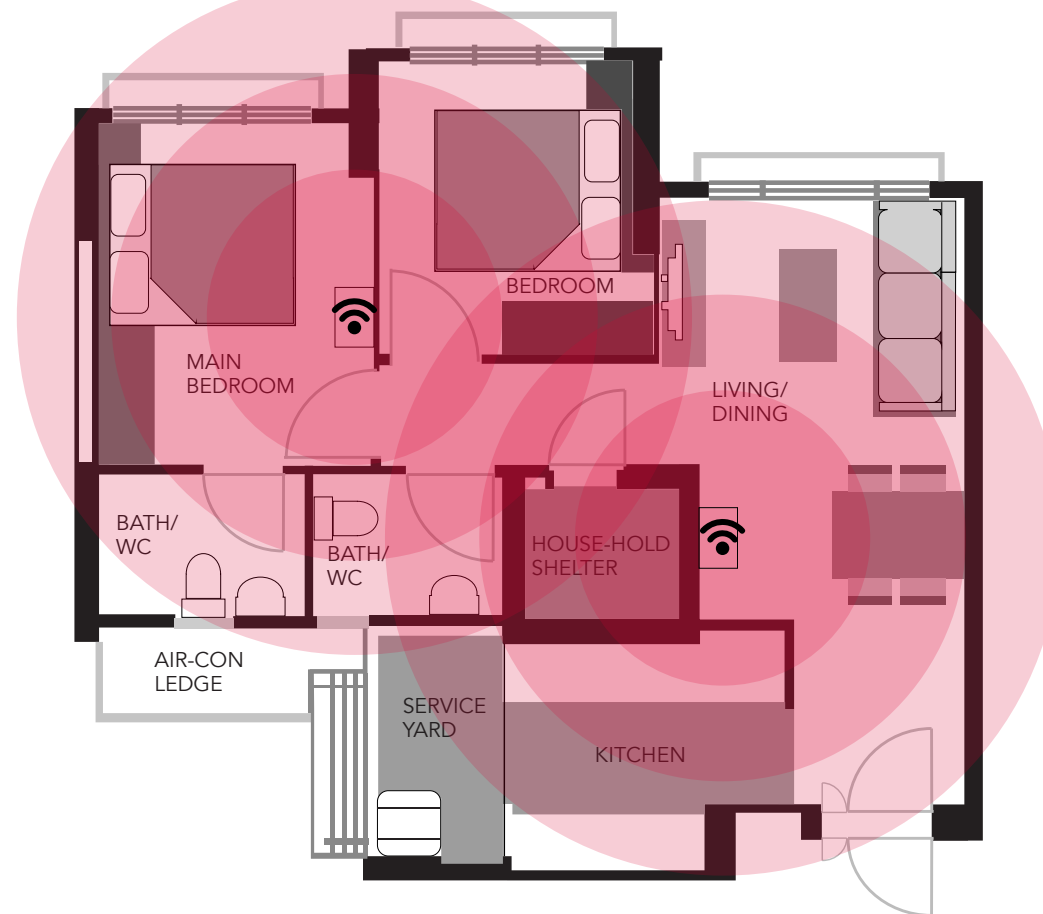
2. Place the second unit of the Mesh Extender close to the first Mesh Extender. Connect the unit to a power point with the adapter and switch on. Depress the power button on the back of the device if the device does not turn on.



3. The LED lights on the second unit will start flashing in amber. Once they turn a solid blue, you're set! Re-position the second unit to a location in-between your Mesh Router/Extender and the area in your home with weak WiFi signal and switch on.

OPTIMAL PLACEMENT

For optimal connection to eliminate WiFi deadspots, the placement of each Mesh Router / Extender device should be within line of sight of the next closest device.



MESH SET-UP 2

Setting up your Mesh Extender (You have a Singtel Mesh Router installed).

1. Connect both units to a power point close to the Mesh Router and turn on.



WPS:
Press & hold for
2 seconds to
pair with your
WiFi Extender.

2. Press & hold the WPS button at the back of your Mesh router for 2 seconds, then press and hold the WPS button on one of the Mesh Extender and wait 30-40 seconds for the LED to turn solid white on the Mesh Router and solid blue on the Mesh Extender.
3. Repeat step 2 with the second Mesh extender.
4. Reposition the 2 Mesh Extenders to a location in-between your Mesh Router/Extender and the area in your home with weak WiFi signal and switch on.