

Singtel

5G+



Product Brochure  
Singtel 5G+ Priority

# Delivering tailored connectivity for business-critical performance

Reliable connectivity for business-critical applications is essential in today's increasingly congested networks. Singtel 5G+ Priority leverages advanced 5G network slicing to allocate resources dynamically, ensuring that users, applications, and enterprises experience optimal performance exactly when and where they need it. Whether for crucial apps or time-sensitive tasks, Singtel 5G+ Priority delivers the efficiency, reliability, and priority required to keep operations running smoothly.

# Singtel 5G+ Priority

---

## Enterprise challenge

In today's hyperconnected world, employees, clients, and critical activities rely on uninterrupted mobile connectivity. The surge in network traffic from business-critical applications, such as infrastructure monitoring, emergency response systems, and productivity tools, significantly strains traditional networks. If left not addressed, this could lead to potential disruptions in business operations.

## Singtel 5G+ Priority

Singtel 5G+ Priority uses network slicing to dynamically distribute resources according to the demands of individual users, apps, or companies. This guarantees **uninterrupted, high-speed, prioritised connectivity** for vital applications like video conferences and real-time data processing, regardless of network demands.

## Features



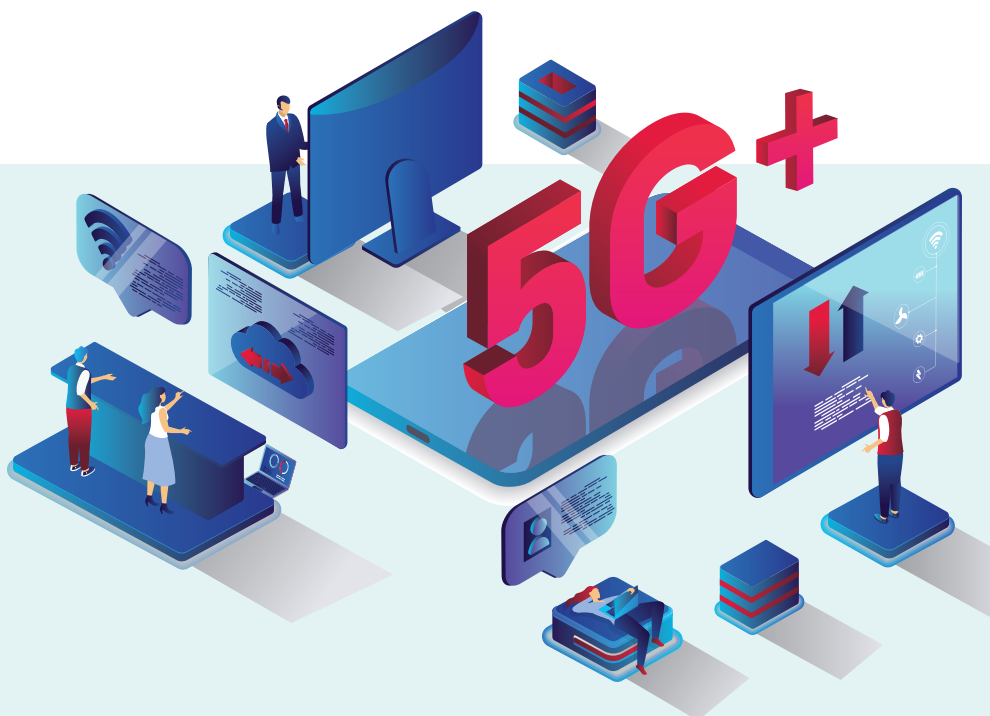
### Data priority via IMSI

- Allocate radio resources to a **dedicated network slice** for critical data traffic
- Prioritises data based on the device's **international mobile subscriber identity (IMSI)**, ensuring smooth access for key users
- Guarantees priority access for critical users, regardless of the app in use



### App priority

- Allocates radio resources specifically to high-priority applications using **network slicing**
- Prioritises business-critical apps like video conferencing
- Ensures uninterrupted service for essential applications during heavy network usage



## Use cases



### Emergency response

Prioritised connectivity ensures first responders can communicate quickly and reliably during emergencies, even when network traffic is high



### Disaster recovery

Dedicated network slices maintain secure data transfer and business communication during critical incidents, minimising downtime



### Large-scale events

Prioritised network slices ensure smooth communication for staff, security, and vendors, even with thousands of attendees using the network



### Critical infrastructure monitoring

Utilities and transportation systems can maintain real-time monitoring and control, even under heavy network loads, ensuring uninterrupted service



### Productivity applications

Bandwidth prioritisation for key tools like video conferencing ensures business continuity during high-traffic periods



### Remote work

Prioritised connectivity ensures remote employees enjoy smooth performance for critical work applications, regardless of their location

## Benefits



### Assurance of high-speed connectivity even in congested environments

- Dynamic resource allocation ensures consistent performance for critical applications
- Delivery of essential bandwidth to ensure business-critical applications operate seamlessly



### Prioritisation of mission-critical services

- Guarantees a reserved, dedicated network for mission-critical services
- Ensures critical communications remain uninterrupted, ensuring business continuity



### Granular service differentiation for competitive advantage

- Customised network performance for specific apps, offering differentiated experience
- Empower enterprises to gain a competitive advantage with performance-based business models

## Why Singtel?

- Singapore's leading 5G operator and a recognised telecommunication leader in Asia, trusted for delivering advanced connectivity solutions.
- Among the first globally to launch app-based network slicing, pioneering innovation in 5G technology.
- Extensive ecosystem of alliance partners and OEMs, offering a full suite of integrated connectivity solutions.
- Expert network consultancy and deployment services led by industry-certified professionals to ensure seamless implementation.
- Comprehensive, one-stop support, with 24/7 global helpdesk services for reliable, round-the-clock assistance.
- Proven expertise in managing high-performance, secure networks trusted by enterprises and public sector clients.

Singtel is a leading Asian communications technology group, operating next-generation connectivity, digital infrastructure and digital businesses including regional data centre arm Nxera and regional IT services arm NCS. The Group has presence in Asia, Australia and Africa and reaches over 780 million mobile customers in 21 countries.

For consumers, Singtel delivers a complete and integrated suite of services, including mobile, broadband and TV. For enterprises, Singtel offers a complementary array of workforce mobility solutions, data hosting, cloud, network infrastructure, analytics and cyber security capabilities.

Singtel is dedicated to continuous innovation, harnessing technology to create new and exciting customer experiences, support enterprises in their digital transformation and shape a more sustainable, digital future.

For more information visit [www.singtel.com/business](https://www.singtel.com/business)