

WELCOME TO

GOMO BROADBAND

You've made the smart switch
to Singapore's best network.



WHAT'S IN THE BOX



1 x Optical Network Terminal (ONT)*



1 x Power Adapter



1 x Ethernet LAN Cable

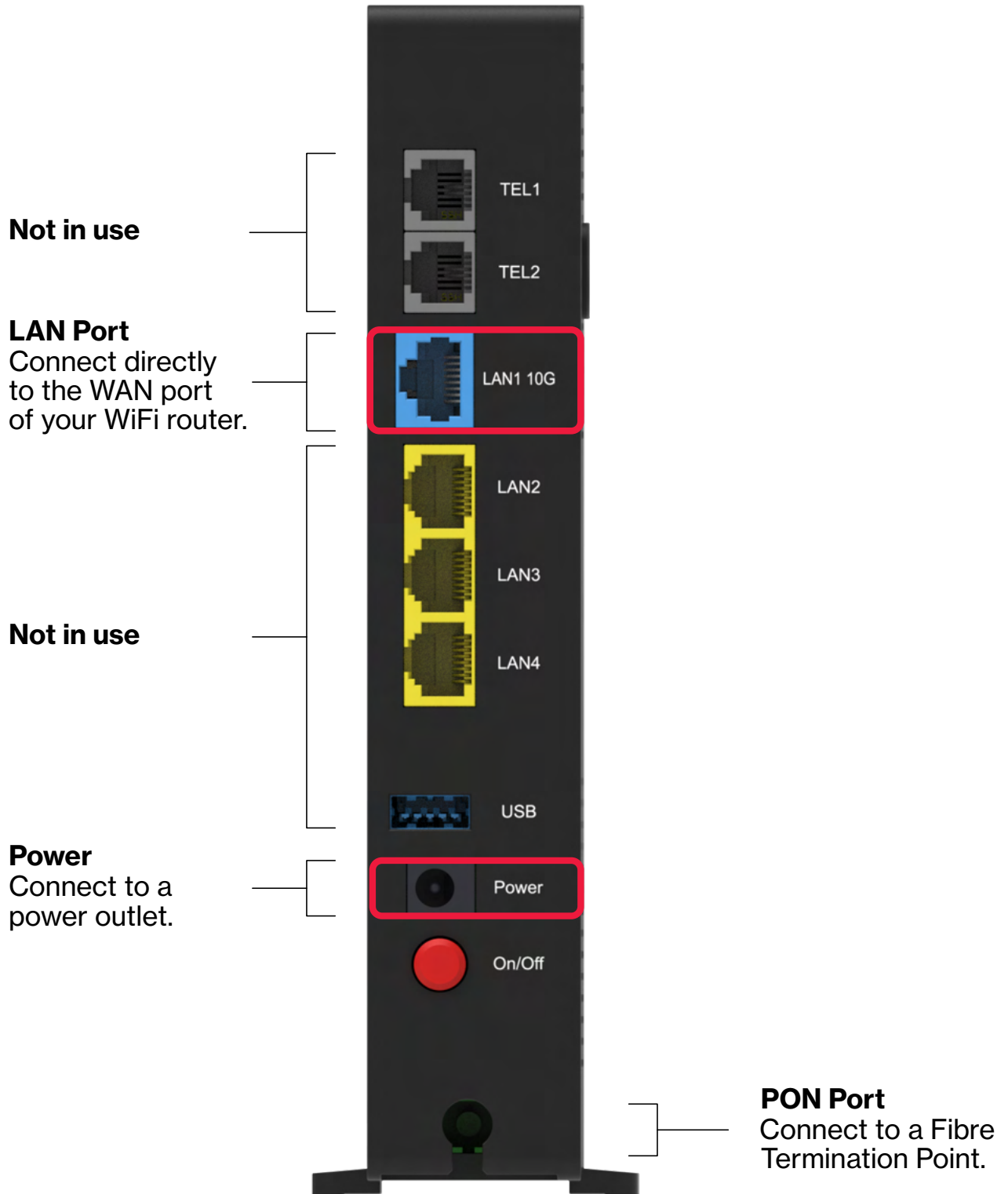


1 x Fibre Patch Cord

*This device is labelled "Optical Network Router" (ONR) but is set up in ONT mode. Do not factory reset the device as reconfiguration may be required.

IMPORTANT THINGS TO NOTE

Knowing your ONT device.



Optical Network Terminal (ONT)

QUICK INSTALLATION GUIDE

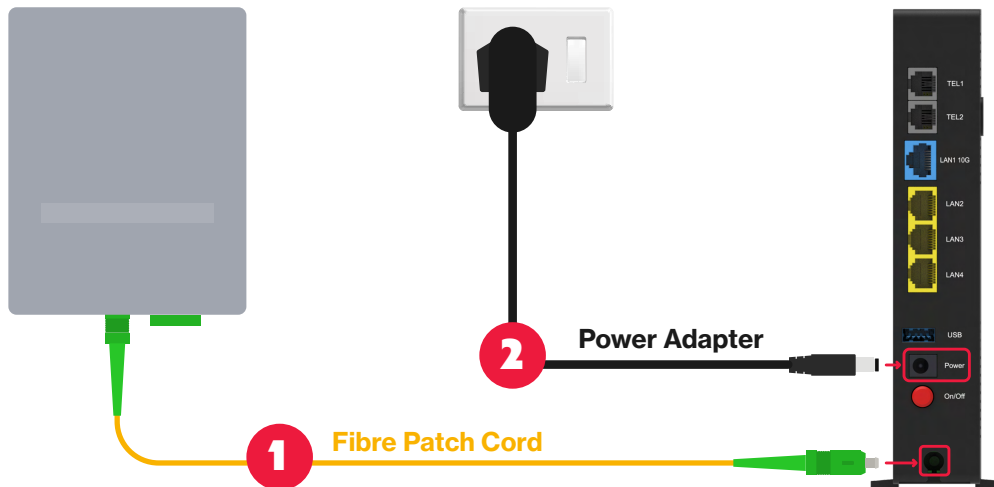
Step 1: Connect your ONT to your Fibre Termination Point

Fibre Termination Point

(Found in your home)

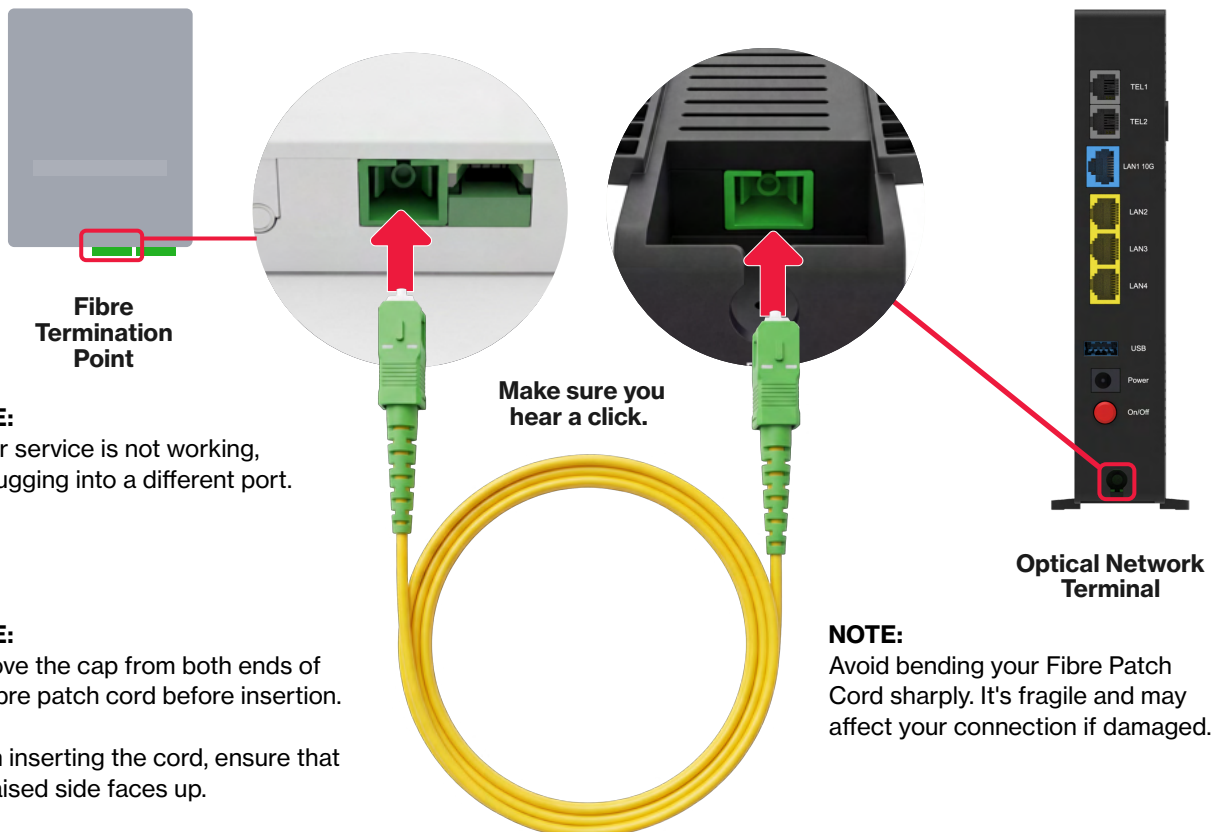
Power Outlet

Optical Network Terminal



IMPORTANT THINGS TO NOTE

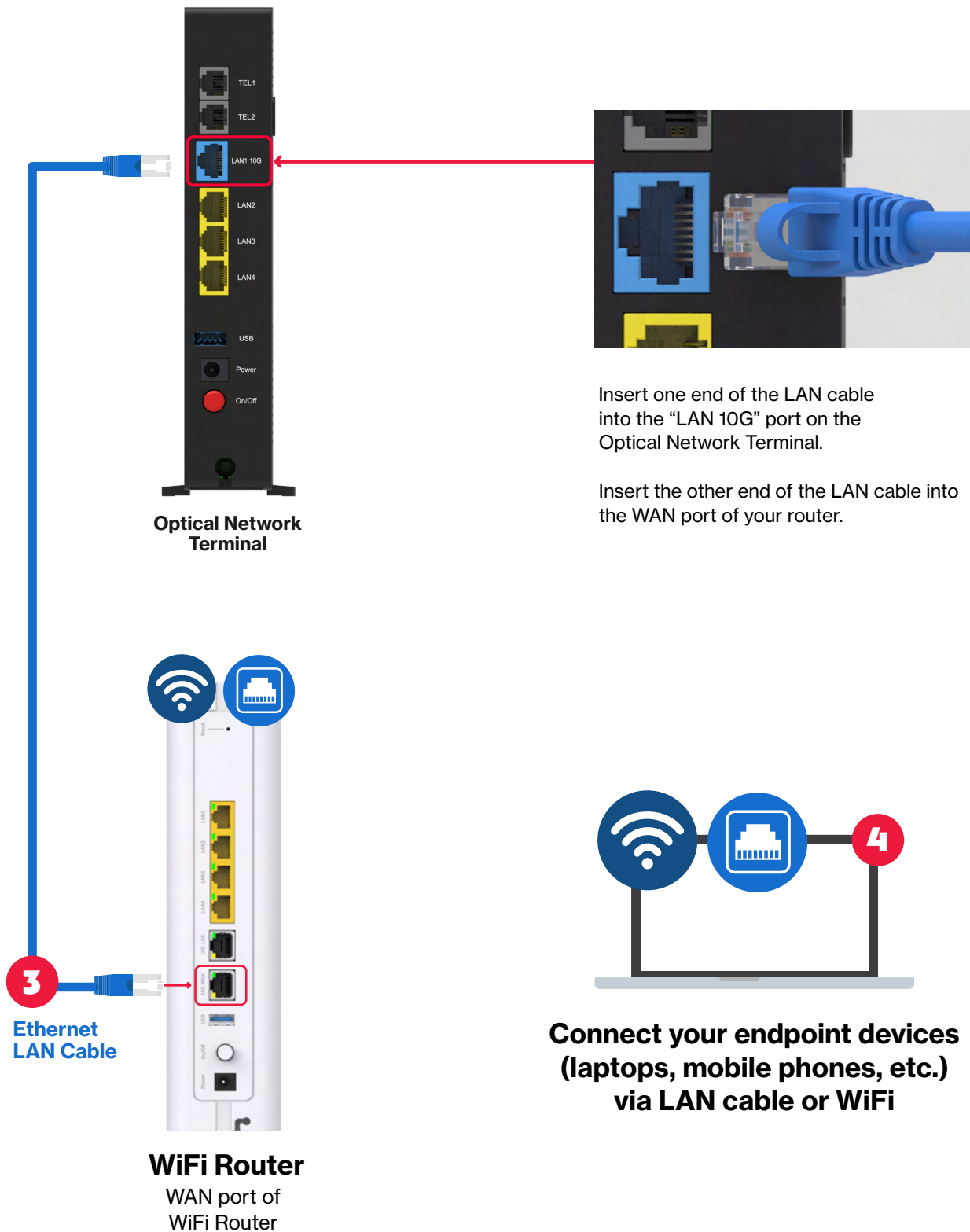
Fibre Patch Cord Installation:



QUICK INSTALLATION GUIDE

Step 2: Connect your ONT to your Router

LAN Cable Installation:






If you've purchased the WiFi Router from us, [visit here](#) to complete your setup.

IMPORTANT THINGS TO NOTE

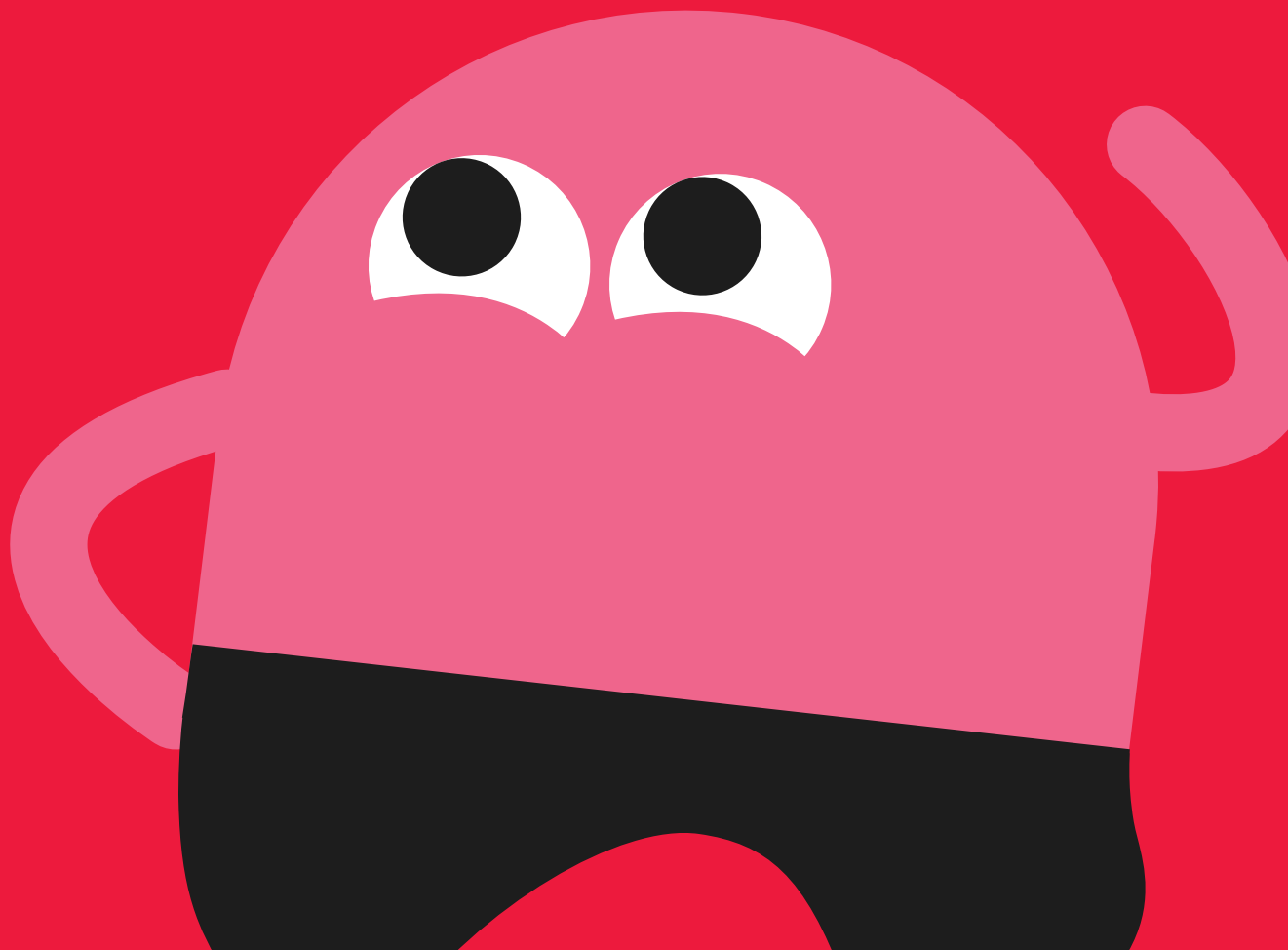
What your successful setup should look like.



Indicator	Status	Description
PON		A steady light for 1-2 minutes indicates stable connection.
		There's something wrong with your connection. Check that your Fibre Patch Cord is securely connected. Ensure all cables are plugged in correctly.
LAN1 10G		Your router is successfully connected!

GET MO' OUT OF YOUR WIFI

Here are some tips to maximise
your experience.



IMPROVE YOUR WIFI COVERAGE

1

PLACE YOUR WIFI ROUTER IN AN OPEN, ELEVATED AREA. LIKE ON A SHELF OR A TABLE.

2

AVOID ENCLOSED SPACES LIKE CABINETS OR DRAWERS.

3

KEEP IT AWAY FROM THICK WALLS, METAL OBJECTS, AND APPLIANCES.

4

POSITION IT CLOSER TO AREAS WHERE WIFI IS USED MOST OFTEN.

NEED MO' HELP?

Visit our [support page](#) or speak to our Zenmo chatbot.

